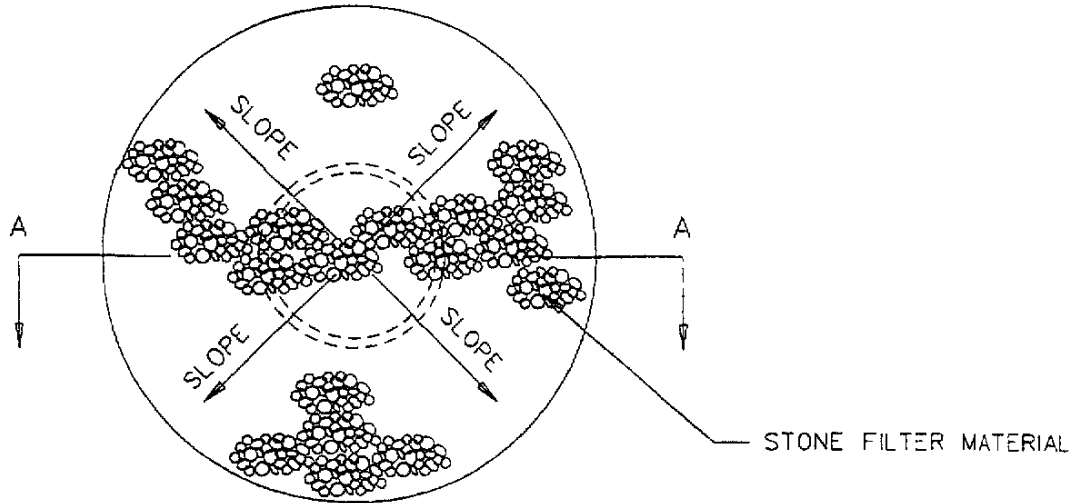


INLET FILTER
NOT TO SCALE

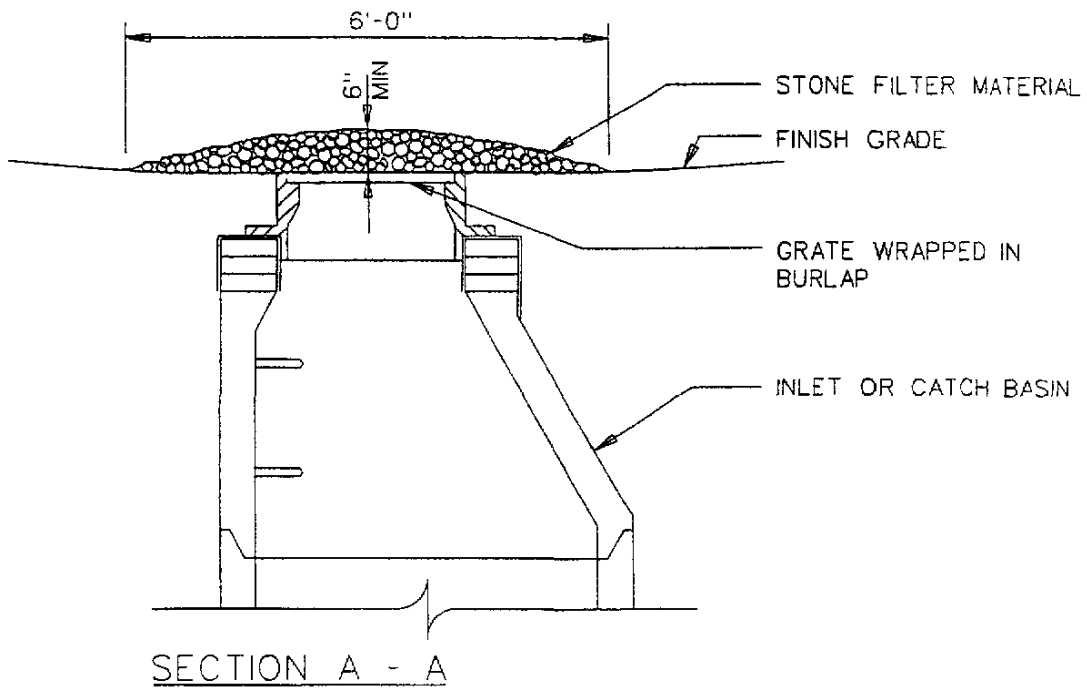
SD-ER-INLT.001



STONE FILTER MATERIAL

PLAN

ALL STORM STRUCTURES
SUBJECT TO SEDIMENTATION TO
RECEIVE PROTECTION AS SHOWN



STONE FILTER MATERIAL

FINISH GRADE

GRATE WRAPPED IN
BURLAP

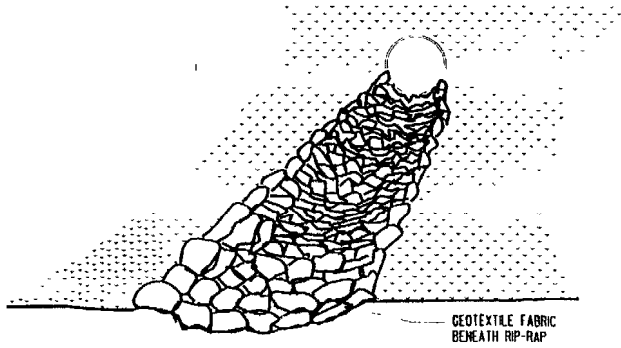
INLET OR CATCH BASIN

SECTION A - A

INLET FILTER

SECTION AND PLAN

sd-er-inl+2 00'



RIP-RAP DETAIL

MATERIAL USED FOR RIP-RAP SHALL BE SOUND, TOUGH, DURABLE AND FREE FROM STRUCTURAL DEFECTS, AND MAY CONSIST OF STONE, ROCK, COBBLESTONE OR BROKEN CONCRETE WITH AT LEAST ONE DIMENSION OF 8 INCHES AND A VOLUME OF NOT LESS THAN 1/3 OF A CUBIC FOOT. SMALLER PIECES MAY BE USED FOR FILLING VOIDS AFTER LARGER PIECES HAVE BEEN SET.

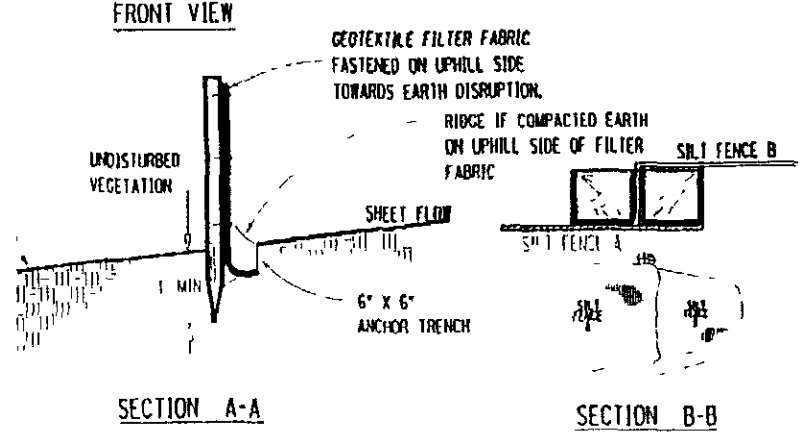
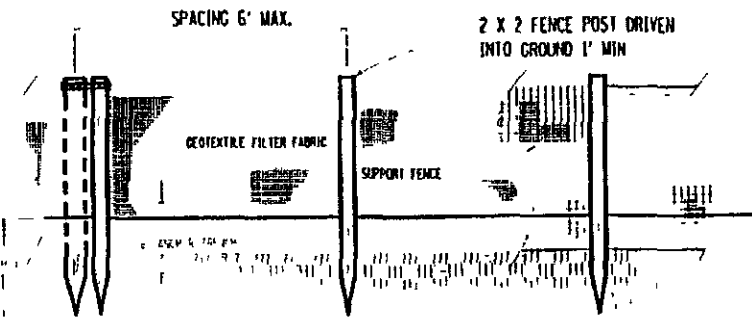
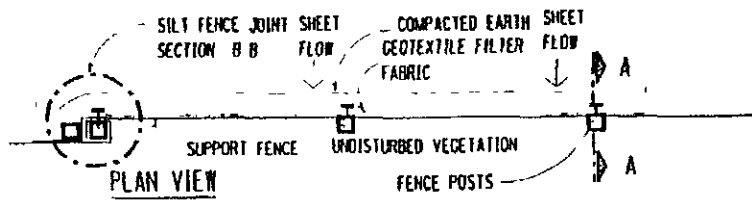
✓ EACH PIECE OF RIP-RAP SHALL BE LAID INDIVIDUALLY BY HAND, AND SHALL BE BEDDED INTO THE SUB-BASE AND AGAINST ADJOINING STONE.

RIP-RAP THICKNESS SHALL BE 8 INCH MINIMUM.

RIP-RAP SHALL BE LAID ON A GRANULAR SUB-BASE WITH A GEOTEXTILE FABRIC BETWEEN THE RIP-RAP AND THE SUB-BASE.

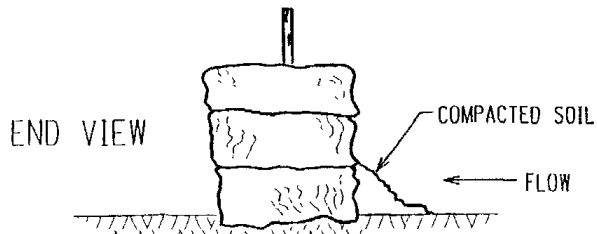
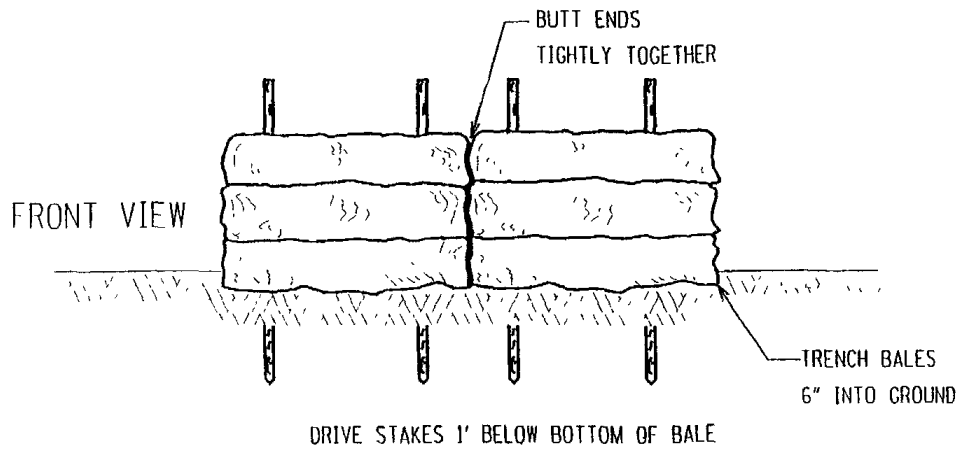
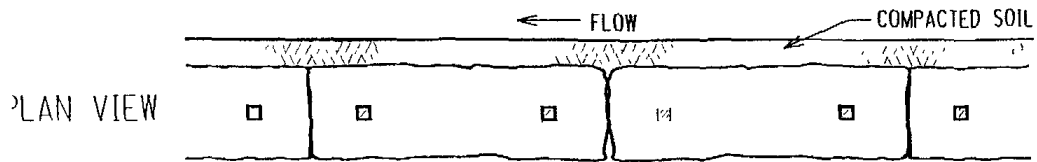
▷ RIP-RAP SHALL BE COMPACTED AS IT IS INSTALLED, AND THE FINISHED SURFACE SHOULD BE EVEN AND TIGHT.

✚ VOIDS BETWEEN PIECES OF RIP-RAP SHALL BE FILLED WITH MORTAR GROUT.

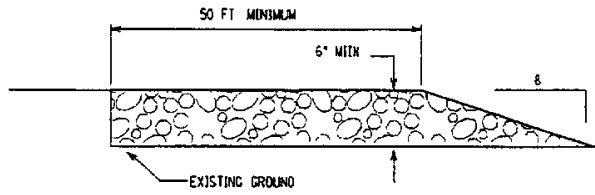


SILT FENCE
NOT TO SCALE

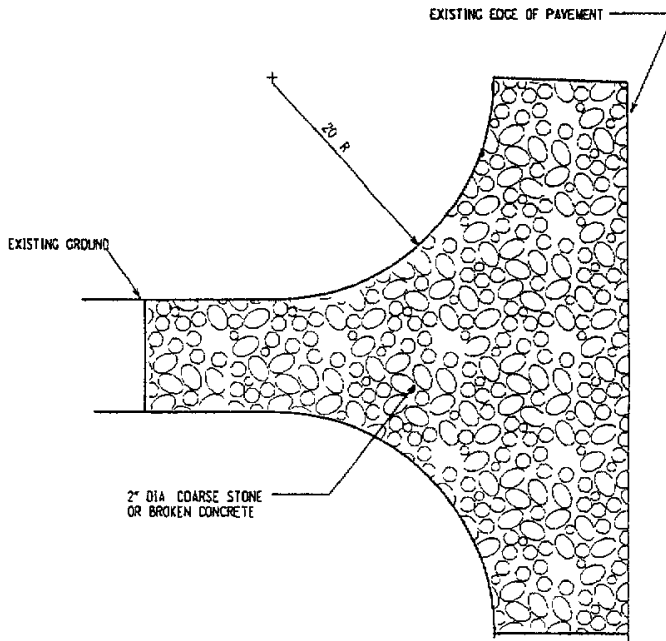
STRAW BALE DIVERSION



NOTE: STRAW BALE DIVERSION IS NOT PERMEABLE AND THEREFORE CANNOT BE USED AS A FILTER UNLESS IT IS INSTALLED WITH A STONE OUTLET FILTER.



SECTION



CONTRACTOR TO INSTALL & MAINTAIN ANTI TRACKING PAD
 WHEN AGGREGATE BECOMES SATURATED WITH FINES CONTRACTOR
 TO SCARIFY AND RELAY AGGREGATE

PLAN ANTI TRACKING PAD DETAIL